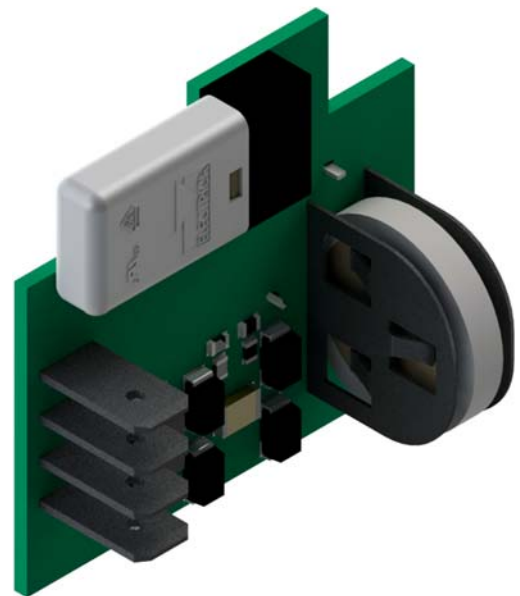
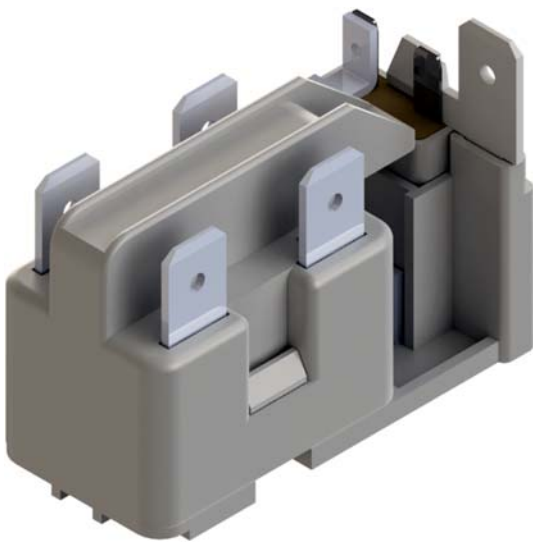
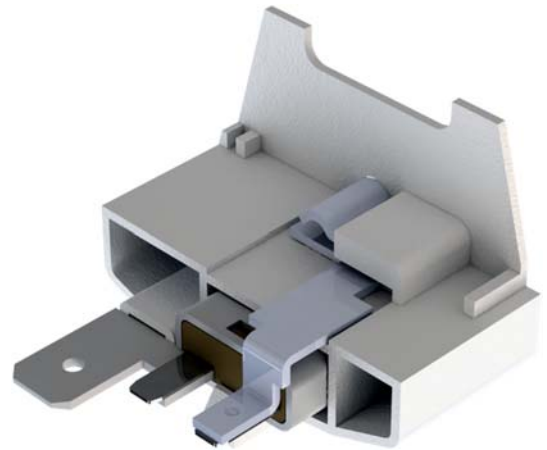


# Universal Protector A Type



# A Type Universal Protector

---



The new A Type (*patented*) thermal protectors have been designed to prevent high temperature and high current conditions within refrigeration compressors, washing machines, dishwashers, dryers, vacuum cleaners and other appliances that normally operate in the 120 to 250 VAC range. The A Type protector's unique sensitivity to currents below one amp (1 A) allows more flexible motor design solutions, as well as placement of the protector outside of the motor windings, in more accessible and serviceable locations.

Available as stand-alone, e-board mount, compressor plug-on and in various combined unit solutions (motor protector and motor starter).

Despite its compact size, the A Type protector has a contact rating of up to 15 amps, thus covering a wide range of appliance applications.

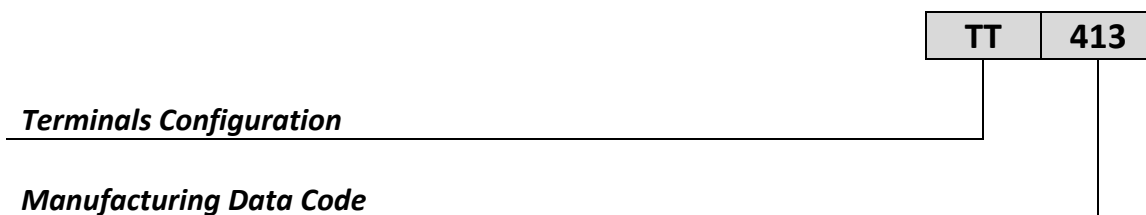
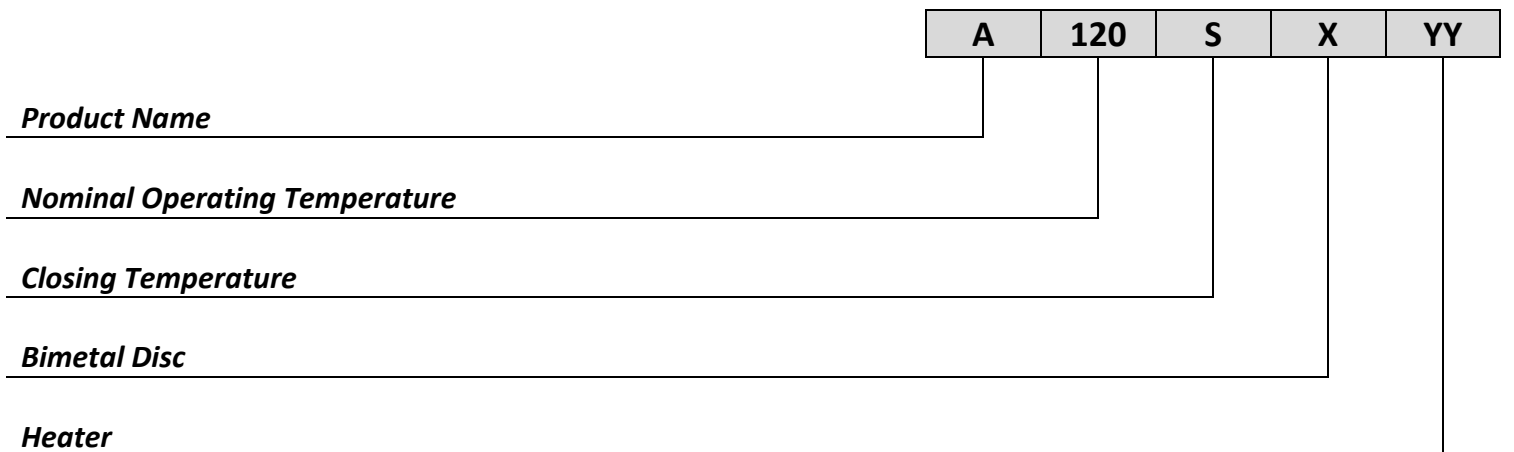
The A Type protector guards against motor overheating from high amp, high temperature, or locked rotor conditions thanks to a unique design which combines a bimetal disc, supplemental heater, and a properly shaped terminal plate. Whenever a fault condition occurs, the combination of higher current flowing in the heater and ambient temperature snaps the disc circuit open. Once reset temperature is reached, the disc snaps back in its normally closed circuit.

The use of the correct heater (and bi-metal disc) configurations, along with calibrated settings, combine to give optimal motor protection, and proper current sensitivity, with accurate-action tripping. The plastic cover design with a built-in gap between terminals, eliminates the need for additional insulation when the protector is correctly mounted on the application.

## GENERAL CHARACTERISTICS

<b>Normally-close circuit</b>	Single pole
<b>Standard temperature range</b>	70°C to 160°C (5°C step)
<b>Tolerance on Open Temperature</b>	± 5°C
<b>Differential</b>	20°C minimum
<b>Maximum contact rating</b>	15A/250VAC, 10000 Cycles
<b>Standard tab terminals</b>	2.8 x 0.3 mm
<b>Wire leads</b>	Optionals
<b>E-board adapter</b>	Optional
<b>Compressor plug-on &amp; combo solutions</b>	Optionals
<b>Approvals</b>	VDE 40044000 (EN60730-1 & 2-2)
	VDE 40044001 (EN60730-1 & 2-4)
	UL E51822
	IEC 60079-15:2010
	CQC

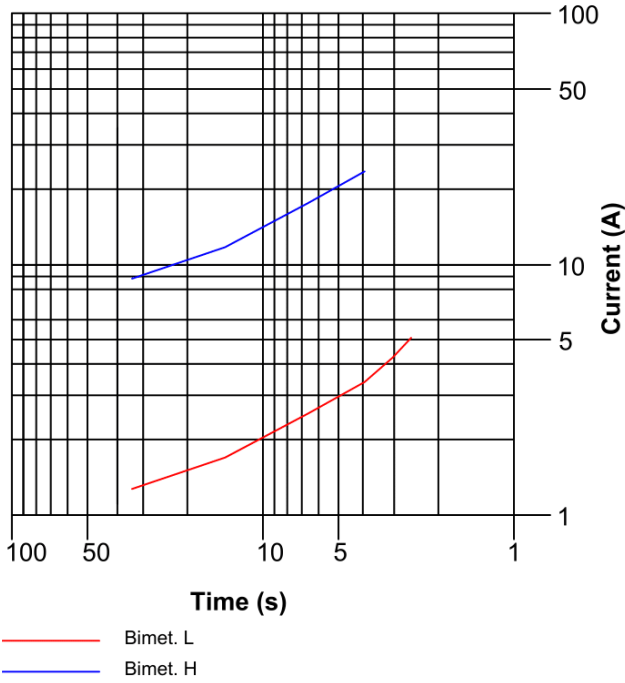
## MARKING & CODE EXPLANATION



## PERFORMANCE CURVES

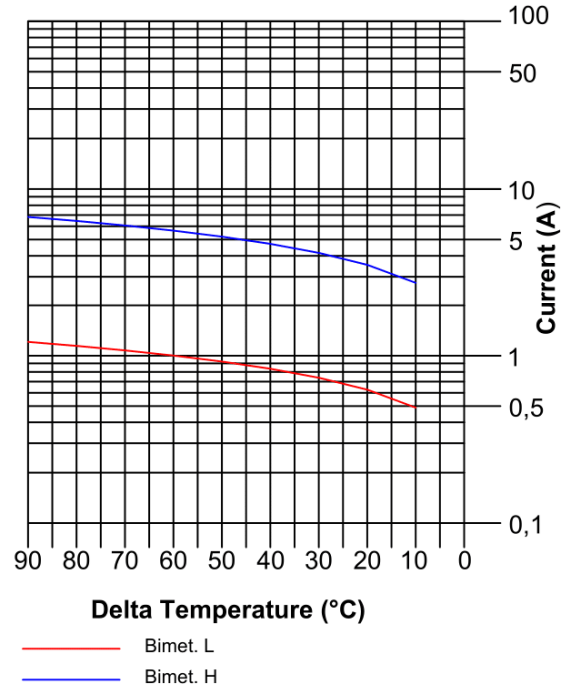
**Average First Cycle Tripping Time vs Current**  
(ambient Temperature = 25C)

Approximate to be used for selecting samples for verification tests

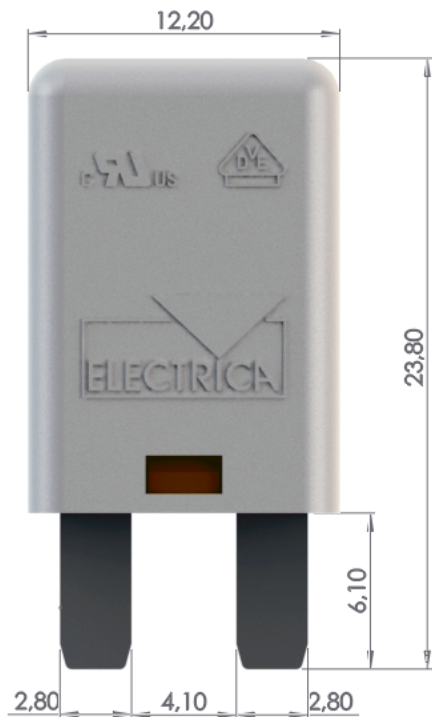


**Ultimate Trip Current vs Ambient Temperature**  
(non circulating air)

Approximate to be used for selecting samples for verification tests



## DIMENSIONS (mm)





---

### **Electrica S.r.l.**

Via privata Della Torre 24, 20127 Milano (MI) - Italia  
Tel.: +39 02 2892641 - Fax: +39 02 2827511  
Web: <https://www.electrica.it> - Email: [info@electrica.it](mailto:info@electrica.it)

### **Microswitches Division**

Via D. Manin 350/21, 20099 Sesto San Giovanni (MI) - Italia  
Tel.: +39 02 24300672 - Fax: +39 02 24303271  
Email: [microswitches@electrica.it](mailto:microswitches@electrica.it)

---