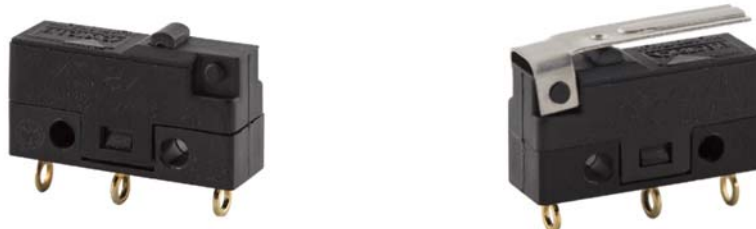


NS subminiature Series

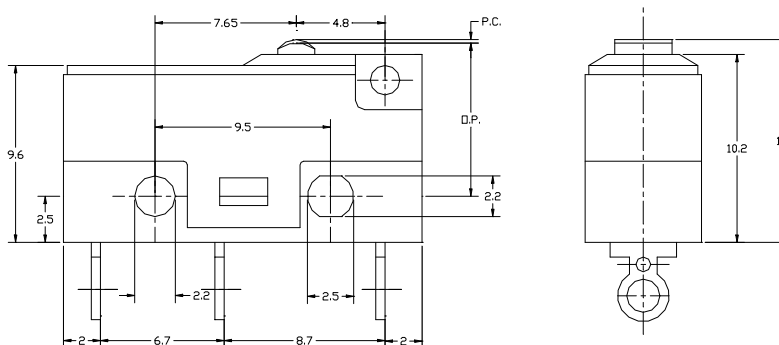


CARATTERISTICHE GENERALI / GENERAL CHARACTERISTICS

Versione / Version	ZN	ZL
Carico nominale a 250V A.C. / Rated load at 250V A.C.	3A	1A
Temperatura ambiente / Ambient temperature limits	-20°+ 85°C	
Grado di protezione / Degree of protection IP	00	
Classe di isolamento / Degree of protection against electric shock	I	
Cicli di vita meccanica / Nu. of mechanical cycles	10 M at 1Hz	
Cicli di vita elettrica / Nu. of electrical cycles	50 000 (5E4)	
Indice di resistenza alle correnti superficiali / PTI Proof tracking index	250 V	
Tensione di tenuta ad impulso / Rated impulse withstand voltage	2,5 kV	
Tipo di cablaggio / Type of conductor to be connected to the terminals	Flexible conductor 1mm ²	
Approvazioni / Approvals	IMQ ; UL	
Norma / Standard	EN61058-A1:2002+A2:2008	

DIMENSIONI / DIMENSIONS

NS1ZN



CODIFICA / CODE EXPLANATION

	NS	123	ZN	-
Serie / Series				
Sovrastrutture di azionamento / Actuators				
Versione / Version				

1 = Pulsantino base / *Basic pin plungers*

20 – 123 = Leva / *Lever*

ZL = Forza azionante bassa / *Low operating force*

ZN = Forza azionante standard / *Standard operating force*

Terminali / Terminals

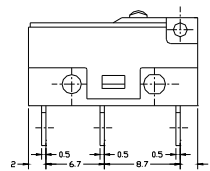
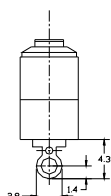
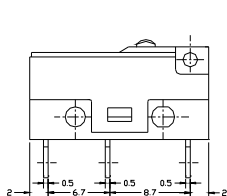
- (**omessi / blank**) = Terminali a saldare / *Solder Terminals*

5 = Attacco faston da 2.8X0.8mm / *Quick connect 2.80x0.80mm*

6 = Terminali per circuito stampato / *Printed Circuit Terminals*

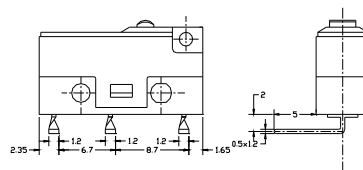
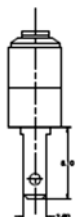
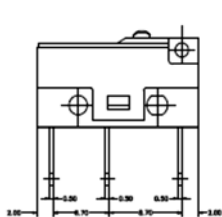
7 = Terminali per circuito stampato, piegati a 90°sx / *Printed Circuit, left angle terminals*

8 = Terminali per circuito stampato, piegati a 90°dx / *Printed Circuit, right angle terminal*



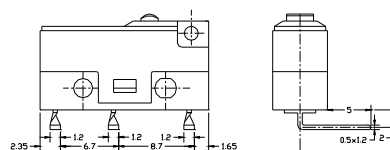
- (**omessi / blank**) = Terminali a saldare / *Solder Terminals*

6 = Terminali per circuito stampato / *Printed Circuit Terminals*



5 = Attacco faston da 2.8X0.8mm / *Quick connect 2.80x0.80mm*

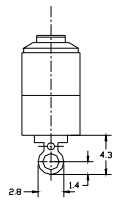
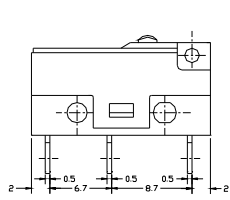
7 = Terminali per circuito stampato, piegati a 90° sx / *Printed Circuit, left angle terminals*



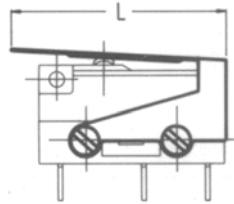
8 = Terminali per circuito stampato, piegati a 90°dx / *Printed Circuit, right angle terminals*

SOVRASTRUTTURE DI AZIONAMENTO / ACTUATORS

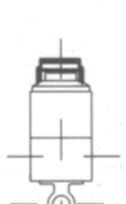
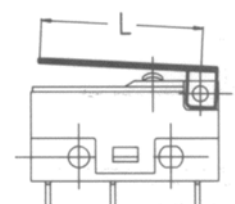
NS1ZN



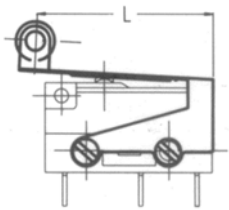
NS20ZN



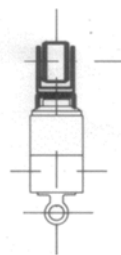
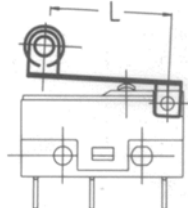
NS25ZN ÷ NS27ZN & NS60ZN



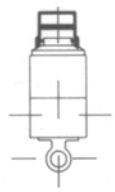
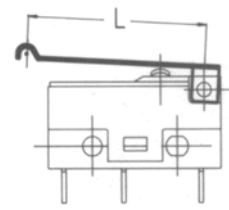
NS30ZN



NS35ZN ÷ NS37ZN



NS123ZN



Modello Model	F.A./O.F. max gr	F.R./R.F. min gr	P.C./P.T. max mm	C.D./D.T. max mm	O.C./O.T. min mm	P.S./S.P. med mm	L mm
NS1 ZN	200	30	0.5	0.15	0.15	8.8 ± 0.4	
NS1 ZL	81	25	0.5	0.15	0.15	8.8 ± 0.4	
NS20 ZN	250	50	2.0	1.0	0.4	10.0 ± 1.0	22.5
NS25 ZN	55	8.0	1.9	0.6	0.6	10.0 ± 1.0	18
NS26 ZN	45	6.5	2.3	0.7	0.7	10.0 ± 1.0	22
NS27 ZN	35	5.0	2.8	0.9	0.9	10.0 ± 1.0	27
NS30 ZN	280	50	2.0	1.0	0.4	15.0 ± 1.0	20.5
NS35 ZN	60	9.0	1.7	0.5	0.5	15.5 ± 1.0	16
NS36 ZN	50	7.5	2.1	0.6	0.6	15.5 ± 1.0	20
NS37 ZN	40	6.0	2.6	0.8	0.8	15.5 ± 1.0	25
NS60 ZN	15	3.0	6.0	1.8	1.8	10.0 ± 1.0	60
NS123 ZN	55	8.0	2.0	0.6	0.6	12.0 ± 1.0	18.8

AVVERTENZE / CAUTION:

Quando si saldano i terminali sul circuito stampato, utilizzare un saldatore da 30 Watt per non più di tre secondi. Lasciar raffreddare i terminali saldati per almeno un minuto e controllare che ogni terminale sia adeguatamente isolato l'uno dall'altro.

When soldering terminals on printed circuit, apply a soldering iron rated at 30W and finish within three seconds. After that, do not move terminals at least one minute. Make sure the terminals of switch are properly insulated each other.

F.A.: Forza Azionante / **O.F.:** Operating Force
F.R.: Forza di Ritorno / **R.F.:** Releasing Force
P.C.: Precorsa / **P.T.:** Pre Travel
C.D.: Corsa Differenziale / **D.T.:** Differential Travel

O.C.: Oltre Corsa / **O.T.:** Over Travel
P.S.: Posizione di Scatto / **S.P.:** Snapping Position
L: Lunghezza Azionatore / **L:** Actuator Length



Electrica S.r.l.

Via privata Della Torre 24, 20127 Milano (MI) - Italia
Tel.: +39 02 2892641 - Fax: +39 02 2827511
Web: <http://www.electrica.it> - Email: info@electrica.it

Microswitches Division

Via D. Manin 350/21, 20099 Sesto San Giovanni (MI) - Italia
Tel.: +39 02 24300672 - Fax: +39 02 24303271
Email: microswitches@electrica.it
