

OPERATING CHARACTERISTICS AT 50Hz

H.P.U. = Approximate Pick-up at 90°C P.U. and D.O. values at 25°C

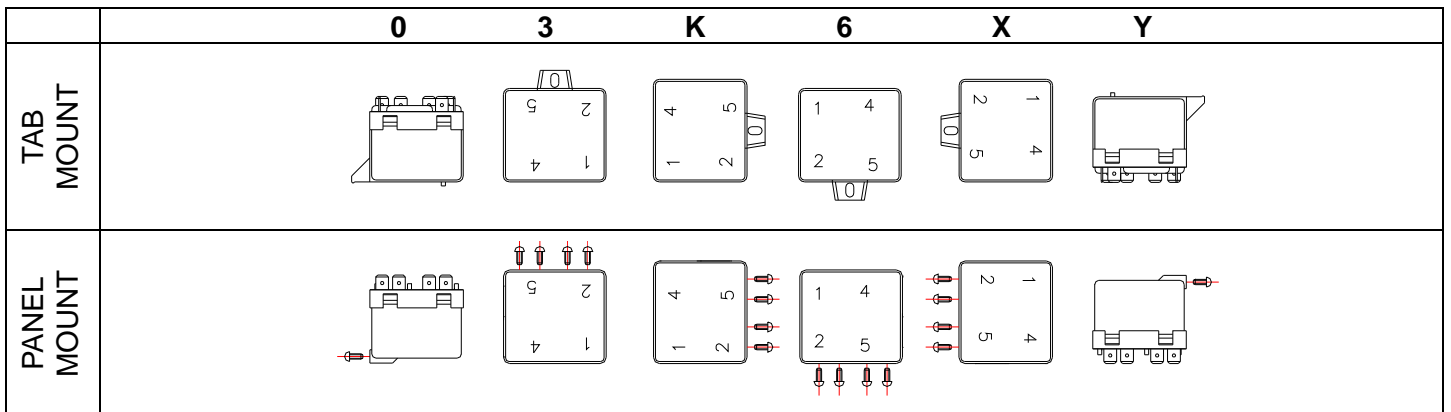
Coil number	2			3		4		5		6		7		8		9	
Vmax at 40°C (V)	299			338		378		356		452		151		530		228	
Resistance at 25°C (Ω)	5600			7500		10700		10000		13800		1500		19500		3900	
	H.P.U.	P.U.	D.O.	P.U.	D.O.	P.U.	D.O.	P.U.	D.O.	P.U.	D.O.	P.U.	D.O.	P.U.	D.O.	P.U.	D.O.
A	120-130											111-124	20-45			111-124	35-77
B	130-140											120-134	20-45			120-134	35-77
C	150-160	140-153	40-90									130-144	20-45			130-144	35-77
D	160-170	150-163	40-90	150-163	40-90							140-153	20-45			140-153	35-77
E	170-180	162-175	40-90	162-175	40-90											149-163	35-77
F	180-190	171-184	40-90	171-184	40-90			180-195	40-105							157-172	35-77
G	190-200	180-193	40-90	180-195	40-105	180-195	40-105	189-205	40-105							168-182	35-77
H	200-220	186-215	40-90	190-215	40-105	195-224	50-110	186-214	60-133							178-192	35-77
I	220-240	205-234	40-105	208-239	50-110	204-233	50-110	204-233	60-133							183-213	35-77
L	240-260	224-252	40-105	224-252	50-110	223-259	50-110	223-252	60-133	223-252	60-130					203-231	35-77
M	260-280	243-271	40-105	239-270	50-110	242-272	50-110	242-272	60-133	239-268	60-135			239-268	75-170		
N	280-300			260-289	50-110	262-290	60-121	262-290	60-133	258-287	60-135			258-287	75-170		
O	300-320					280-310	60-121	280-310	60-133	277-305	60-135			277-305	75-170		
P	320-340					300-328	60-121	300-328	60-154	295-324	60-135			295-324	75-170		
Q	340-360					318-347	60-121			314-342	60-135			314-342	75-180		
R	350-370													323-352	75-180		
S	360-380													332-361	75-180		

OPERATING CHARACTERISTICS AT 60Hz

H.P.U. = Approximate Pick-up at 90°C P.U. and D.O. values at 25°C

Coil number	2			3		4		5		6		7		8		9	
Vmax at 40°C (V)	332			375		420		395		502		168		588		253	
Resistance at 25°C (Ω)	5600			7500		10700		10000		13800		1500		19500		3900	
	H.P.U.	P.U.	D.O.	P.U.	D.O.	P.U.	D.O.	P.U.	D.O.	P.U.	D.O.	P.U.	D.O.	P.U.	D.O.	P.U.	D.O.
AA	120-130											111-124	20-45			111-124	35-77
AB	130-140											120-134	20-45			120-134	35-77
AC	150-160											130-144	20-45			130-144	35-77
AD	160-170	150-163	40-90									140-153	20-45			140-153	35-77
AE	170-180	162-175	40-90									149-163	20-45			149-163	35-77
AF	180-190	171-184	40-90					180-195	40-105							157-172	35-77
AG	190-200	180-193	40-90	180-195	40-105			189-205	40-105							168-182	35-77
AH	200-220	186-215	40-90	190-215	40-105	195-224	60-121	186-214	60-130							178-192	35-77
AI	220-240	205-234	40-90	208-239	50-110	204-233	60-121	204-233	60-130							183-213	35-77
AL	240-260	224-252	40-105	224-252	50-110	223-259	60-121	223-252	60-130							203-231	35-77
AM	260-280	243-271	40-105	239-270	50-110	242-272	60-121	242-272	60-140	239-268	60-135					221-250	35-77
AN	280-300			260-289	50-110	262-290	60-121	262-290	60-140	258-287	60-135			258-287	75-170		
AO	300-320					280-310	60-121	280-310	60-140	277-305	60-135			277-305	75-170		
AP	320-340					300-328	60-121	300-328	60-140	295-324	60-135			295-324	75-170		
AQ	340-360					318-347	60-121			314-342	60-135			314-342	75-180		
AR	350-370													323-352	75-180		
AS	360-380													332-361	75-180		

OPERATING POSITION



Devices calibrated in specified mounting position.

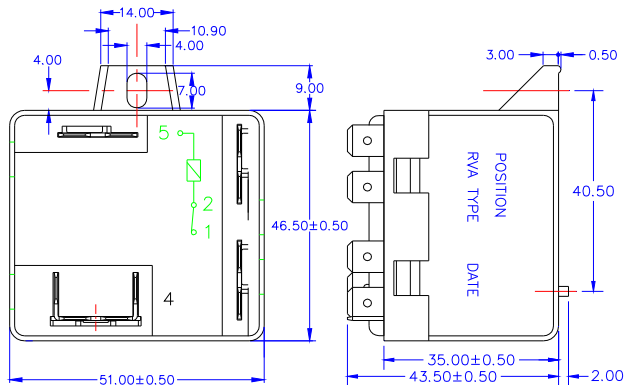
Pick-up voltage may vary somewhat if mounted in positions other than specified.

CONFIGURATIONS

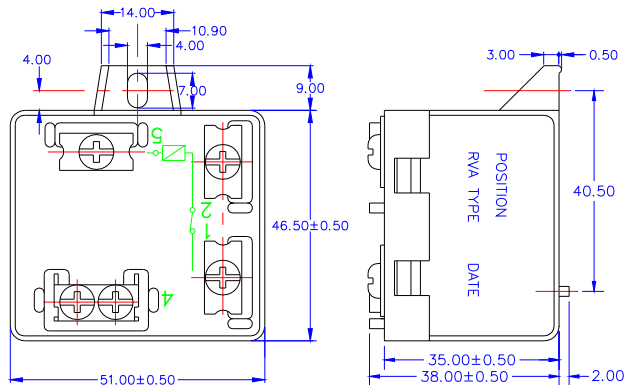
	3 Twin quick-connect (#1, 2, 5)	5 Twin quick-connect (2 on #4)	3 Screws (#1, 2, 5)	5 Screws (2 screws on #4)
TAB MOUNT	L	D	H	C
PANEL MOUNT	Z	R	U	P

DRAWINGS (All dimensions in millimetre ± 0.25)

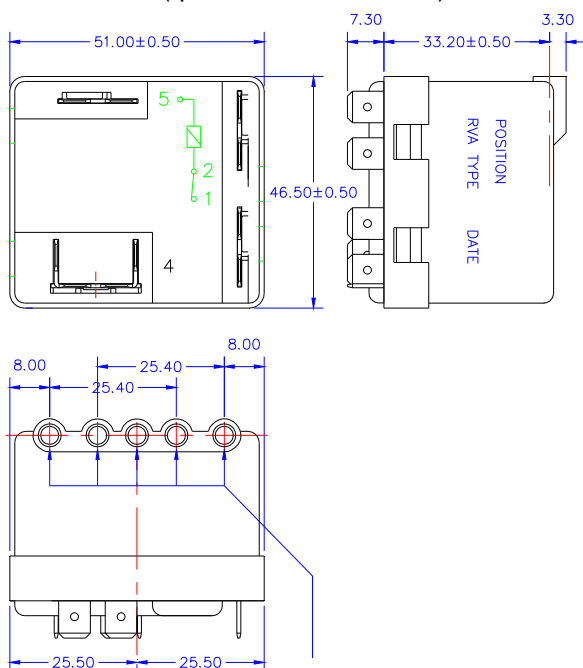
TAB MOUNT (quick-connect terminal)



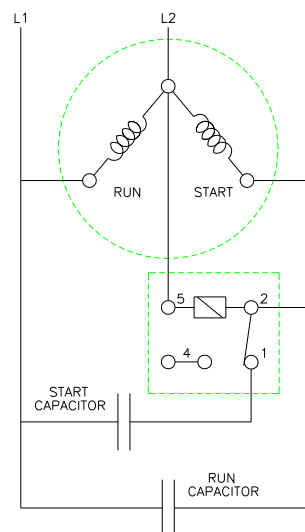
TAB MOUNT (screw terminal)



PANEL MOUNT (quick-connect terminal)



WIRING DIAGRAM



When engaging the plastic mould recess, use two flat head, self tapping screw, size 4.2mm, 9.5mm long (UNI-EN-ISO 1481 for slotted screws, UNI-EN-ISO 7049 for screws with a cross recess).

For any different configuration, contact the Factory

Electrica s.r.l. - via privata Della Torre, 24 - 20127 Milano - Italia
 Tel. +39 02 2892641 Fax +39 02 2827511
www.electrica.it info@electrica.it