



## 3/4" Motor Protector T TYPE

- The T motor protector is designed to protect single phase induction motors against overload and locked rotor conditions up to 65A.
- **AUTOMATIC RESET:** Main application is protection of hermetic compressor for refrigeration. Models with cover are approved for use with flammable refrigerant gases.
- **MANUAL RESET:** Main application is protection of electric motor where automatic reset would be dangerous or otherwise undesirable (Food Mixers, Chain saws, etc.). Trip-free to assure contact break independent of manual action.



### GENERAL CHARACTERISTICS

- **CONTACT CONFIGURATION:** Single pole - Double break - Single throw - N.C.
- **CONTACT RATING:** Low capacity 40A 115Vac, 30A 230Vac  
High capacity 65A 115Vac, 50A 230Vac  
Above ratings are locked-rotor inductive currents (LRA)
- **MAXIMUM OPERATING TEMPERATURE:** 150°C
- **OPENING TEMPERATURE:** 65°C up to 150°C ( ±5°C )  
-----Minimum differential 25°C nominal (or manual)
- **RESET TEMPERATURE** 41°C up to 102°C ( ±9°C )
- **FIRST CYCLE TRIP CURRENT** (at 25°C in 7.5-14seconds) from 3 to 50A
- **ULTIMATE TRIP CURRENT** from 0.6 to 25A
- **AUXILIARY HEATERS** selection of flat or coiled heaters
- **DISC** Different physical sizes, broad range of material resistivity
- **TERMINAL CONFIGURATION:** Quick-Connect tab  
M3.5 screws  
Solder terminal  
Cable leads (AWG 14 or AWG 16)
- **APPROVALS :**

UL	E-51822
VDE	40011389 ( IEC 60730-2-4 )
	40003846 ( IEC 60730-2-2 )
CQC	10002047074
	IEC 60079-15 (automatic models with cover)

---

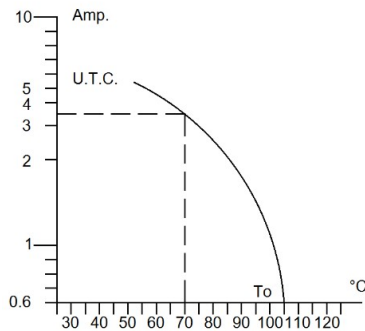
Please consult factory for details of individual approval or particular configuration.



CODE:	F	J	N	S	U	V	A
TEMP.°C	102	92	78	69	61	57	Manual

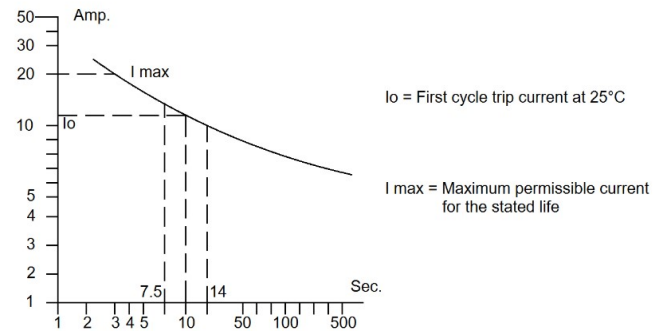
Flat types - Letters from A to F  
Coiled types-Letters from G to L

## EXAMPLE OF PERFORMANCE CURVES



U.T.C. = Ultimate trip current at a given temperature (usually 70°C)

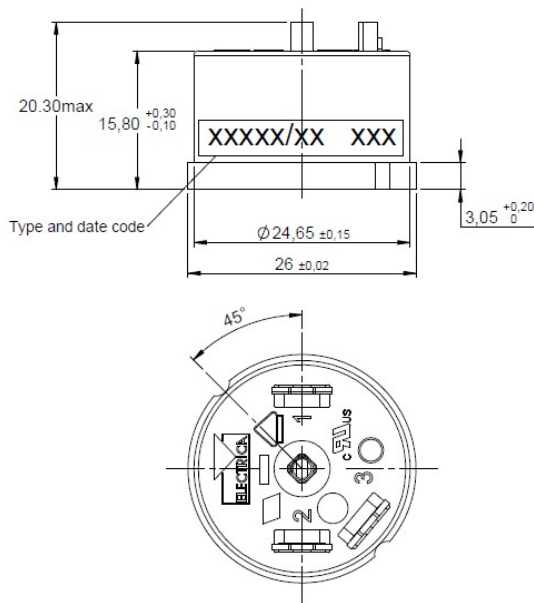
To = Disc opening temperature (no current)



I0 = First cycle trip current at 25°C

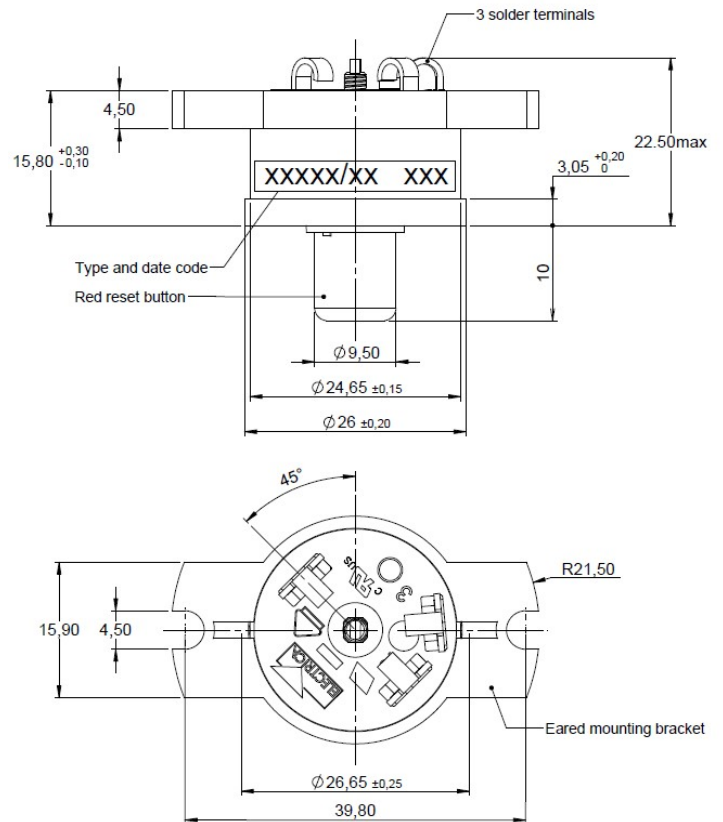
I max = Maximum permissible current for the stated life

## OUTLINE DRAWINGS



### Automatic Reset

Eared mounting available on request



### Manual Reset

Eared mounting available on request  
Red or green button option

For special applications or mountings not shown in this catalogue, please contact the Factory

**Electrica s.r.l.** - via privata Della Torre, 24 - 20127 Milano - Italy  
Tel. +39 02 2892641 Fax +39 02 2827511  
[www.electrica.it](http://www.electrica.it) [info@electrica.it](mailto:info@electrica.it)